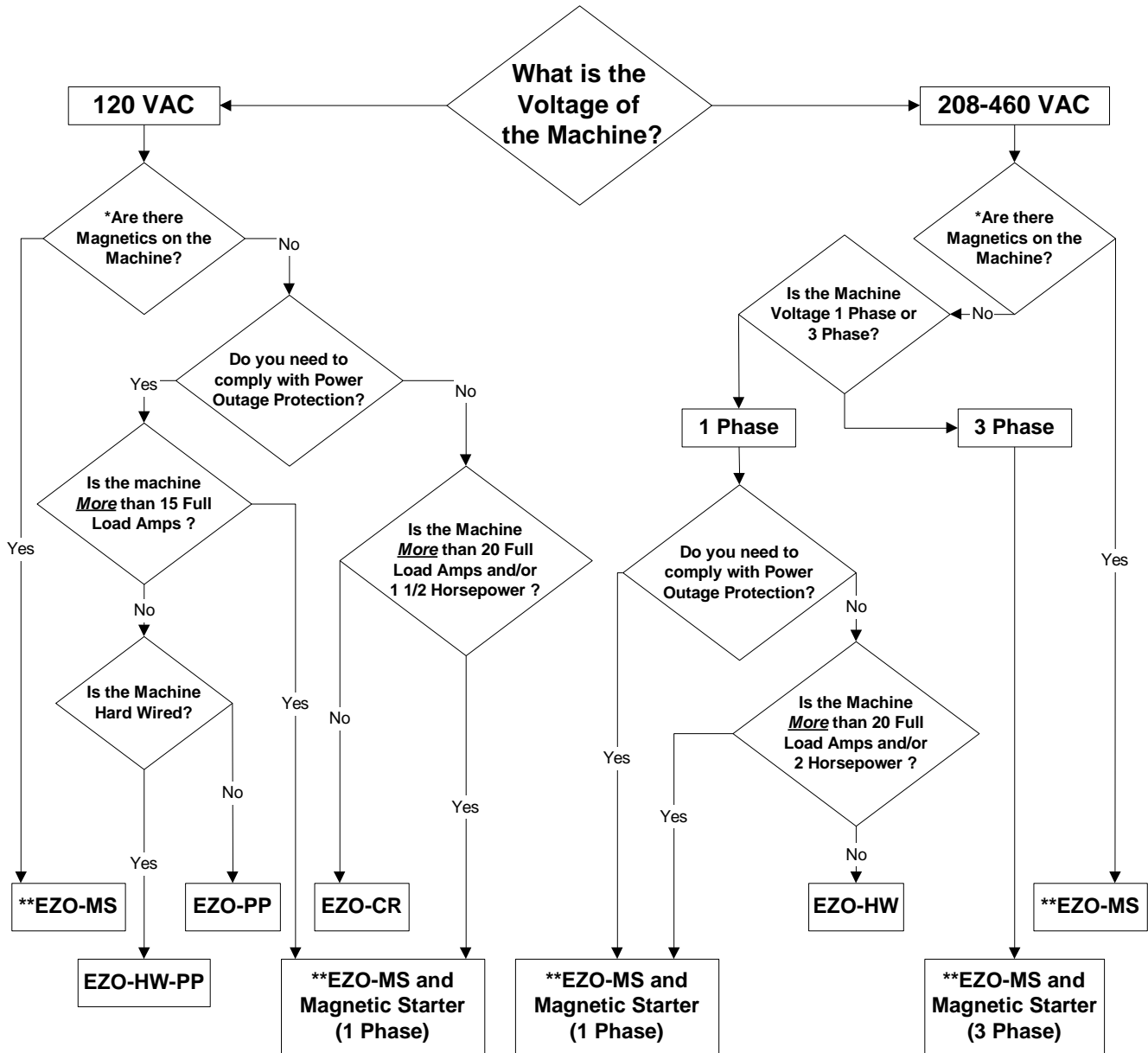


EASY OFF™ Model Selection & Power Outage Test



** EZO-MS must be used with a Magnetic Starter, which is either supplied or is existing on the machine.

* How to test your machine to determine if it has a magnetic starter that provides Power Outage Protection:

1. Clear the machine of any debris and make sure it is safe to start.
2. Start the machine and let it come up to full running speed.
3. While the machine is running, disconnect the power from the machine by either unplugging the machine or shutting the circuit breaker / disconnect off.
4. After the machine has coasted to a stop, re-energize the power to the machine:

- If the machine **RESTARTS** after the restoration of power, then the machine **IS NOT EQUIPPED** with Power Outage Protection
- If the machine **REMAINS OFF**, then the machine **IS EQUIPPED** with Power Outage Protection